

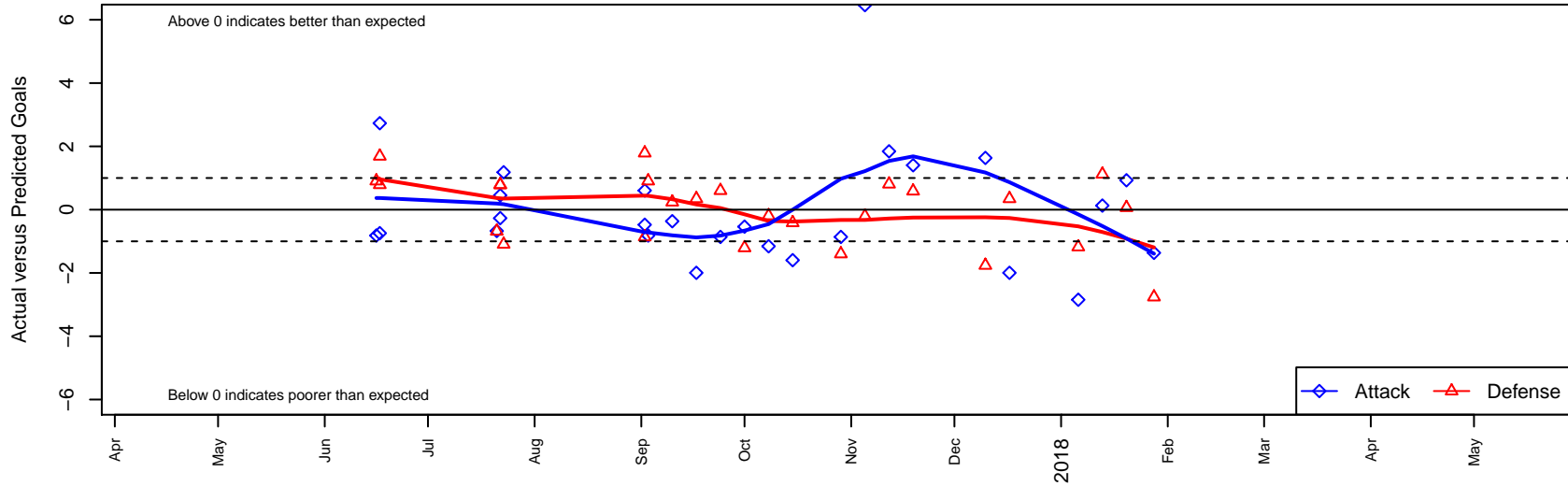
STU Evolution Black B01

South Tacoma United
 Tacoma, WA
 B01 total strength=1497
 attack=15.17 defense=8.25
 fall league = NPSL DIVISION 1 (01) U17
 notes= Garcia 2017

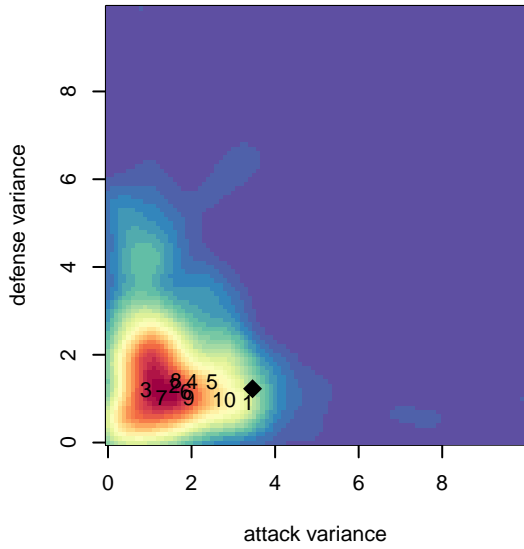
alt names used:
 STU BU17 Garcia
 STU Evolucion 01 Garcia
 STU Evolution B01 Garcia
 STU Evolution BU17 Garcia
 STU Evolution B01 Garcia

Venues played:
 2017 Starfire Spring Classic BU17
 2017 Sounders FC Cup BU17
 2017 Labor Day Cup BU17 Gold
 2017 NPSL DIVISION 1 (01) U17
 2017 Founders Cup B01 Div A

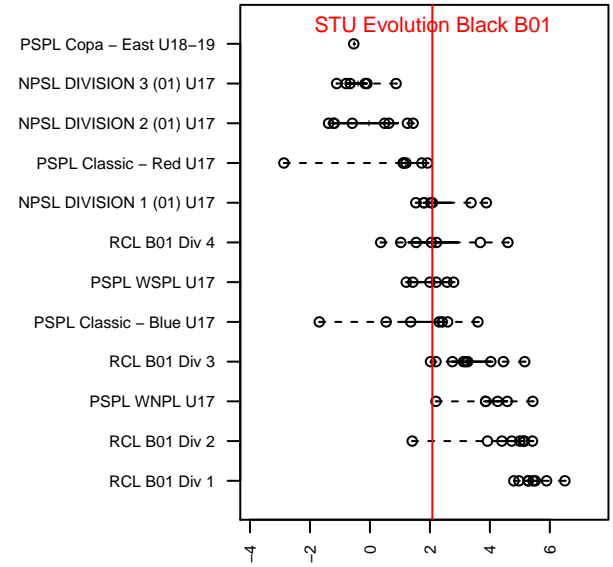
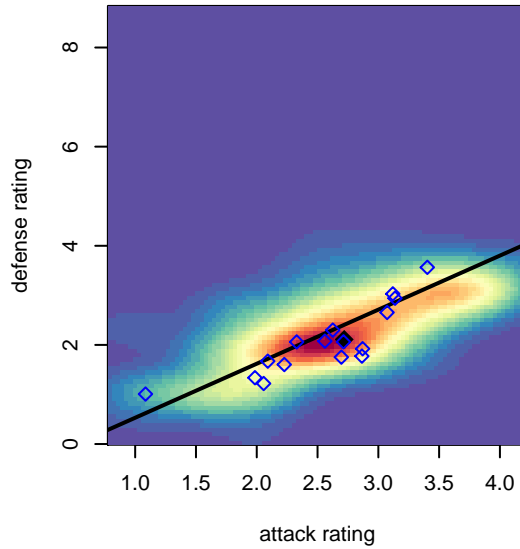
STU Evolution Black B01
 Dots are actual minus expected GF (blue circles) and GA (red triangles).
 Blue line is smoothed change in attack strength. Red is smoothed change in defense strength.



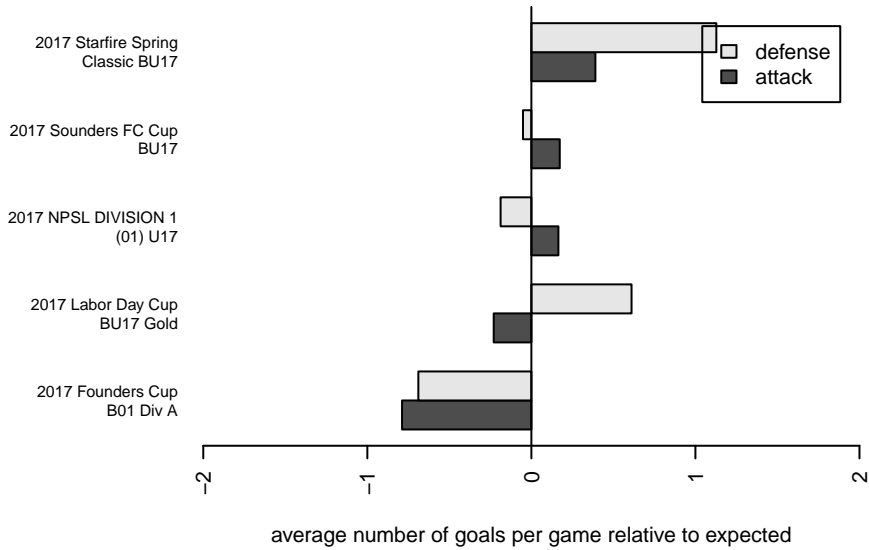
**attack and defense variance (black dot)
relative to other teams
and top 10 in region**



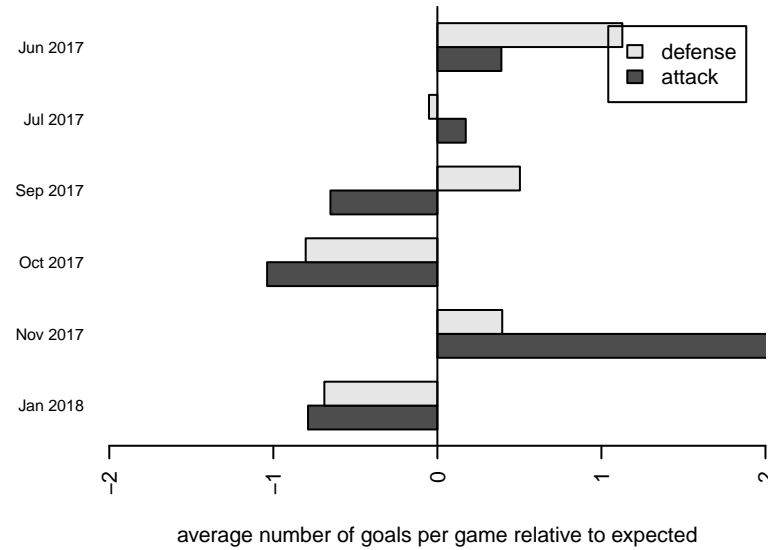
**attack and defense rating
relative to others at age
and all opponents in last 13 months**



Performance relative to 13 month average



Performance relative to 13 month average



| date | home | | away | | venue | pred.home | pred.away |
|-------------|-----------------------------|---|-----------------------------|---|-----------------------------------|------------------|------------------|
| 2018-01-28 | Seattle United S Blue B01 | 5 | STU Evolution Black B01 | 0 | 2017 Founders Cup B01 Div A | 2.24 | 1.37 |
| 2018-01-20 | STU Evolution Black B01 | 4 | FWFC Select B01 | 1 | 2017 Founders Cup B01 Div A | 3.07 | 1.06 |
| 2018-01-13 | STU Evolution Black B01 | 2 | BIFC Blue B01 | 0 | 2017 Founders Cup B01 Div A | 1.87 | 1.12 |
| 2018-01-06 | NSC White B01 | 2 | STU Evolution Black B01 | 1 | 2017 Founders Cup B01 Div A | 0.82 | 3.85 |
| 2017-12-17 | STU Evolution Black B01 | 0 | Seattle United W Blue B01 | 1 | 2017 NPSL DIVISION 1 (01) U17 | 2.00 | 1.35 |
| 2017-12-10 | STU Evolution Black B01 | 3 | Seattle United S Blue B01 | 4 | 2017 NPSL DIVISION 1 (01) U17 | 1.37 | 2.24 |
| 2017-11-19 | Crossfire Select Taylor B01 | 1 | STU Evolution Black B01 | 4 | 2017 NPSL DIVISION 1 (01) U17 | 1.59 | 2.60 |
| 2017-11-12 | STU Evolution Black B01 | 4 | NSC Green Wave B01 | 1 | 2017 NPSL DIVISION 1 (01) U17 | 2.16 | 1.81 |
| 2017-11-05 | Southlake Select Vipers B01 | 2 | STU Evolution Black B01 | 9 | 2017 NPSL DIVISION 1 (01) U17 | 1.79 | 2.54 |
| 2017-10-29 | Storm King B01 | 4 | STU Evolution Black B01 | 0 | 2017 NPSL DIVISION 1 (01) U17 | 2.60 | 0.86 |
| 2017-10-15 | STU Evolution Black B01 | 1 | Crossfire Select Taylor B01 | 2 | 2017 NPSL DIVISION 1 (01) U17 | 2.60 | 1.59 |
| 2017-10-08 | NSC Green Wave B01 | 2 | STU Evolution Black B01 | 1 | 2017 NPSL DIVISION 1 (01) U17 | 1.81 | 2.16 |
| 2017-10-01 | STU Evolution Black B01 | 2 | Southlake Select Vipers B01 | 3 | 2017 NPSL DIVISION 1 (01) U17 | 2.54 | 1.79 |
| 2017-09-24 | STU Evolution Black B01 | 0 | Storm King B01 | 2 | 2017 NPSL DIVISION 1 (01) U17 | 0.86 | 2.60 |
| 2017-09-17 | Seattle United W Blue B01 | 1 | STU Evolution Black B01 | 0 | 2017 NPSL DIVISION 1 (01) U17 | 1.35 | 2.00 |
| 2017-09-10 | Seattle United S Blue B01 | 2 | STU Evolution Black B01 | 1 | 2017 NPSL DIVISION 1 (01) U17 | 2.24 | 1.37 |
| 2017-09-03 | STU Evolution Black B01 | 1 | Eclipse FC B01 | 1 | 2017 Labor Day Cup BU17 Gold | 1.82 | 1.91 |
| 2017-09-02 | STU Evolution Black B01 | 2 | NPSA Titans White B01 | 0 | 2017 Labor Day Cup BU17 Gold | 1.40 | 1.79 |
| 2017-09-02 | Kitsap Alliance FC Red B01 | 4 | STU Evolution Black B01 | 0 | 2017 Labor Day Cup BU17 Gold | 3.14 | 0.48 |
| 2017-07-23 | Eclipse FC B01 | 3 | STU Evolution Black B01 | 3 | 2017 Sounders FC Cup BU17 | 1.91 | 1.82 |
| 2017-07-22 | ISC Gunners B B01 | 0 | STU Evolution Black B01 | 3 | 2017 Sounders FC Cup BU17 | 0.79 | 3.27 |
| 2017-07-22 | NWSC Deception FC B01 | 0 | STU Evolution Black B01 | 5 | 2017 Sounders FC Cup BU17 | 0.78 | 4.55 |
| 2017-07-21 | STU Evolution Black B01 | 5 | RSA Elite A B01 | 1 | 2017 Sounders FC Cup BU17 | 5.67 | 0.32 |
| 2017-06-17 | Fraser Valley Selects B01 | 1 | STU Evolution Black B01 | 0 | 2017 Starfire Spring Classic BU17 | 2.69 | 0.74 |
| 2017-06-17 | STU Evolution Black B01 | 6 | ISC Gunners B B01 | 0 | 2017 Starfire Spring Classic BU17 | 3.27 | 0.79 |
| 2017-06-16 | STU Evolution Black B01 | 1 | Eclipse FC B01 | 1 | 2017 Starfire Spring Classic BU17 | 1.82 | 1.91 |